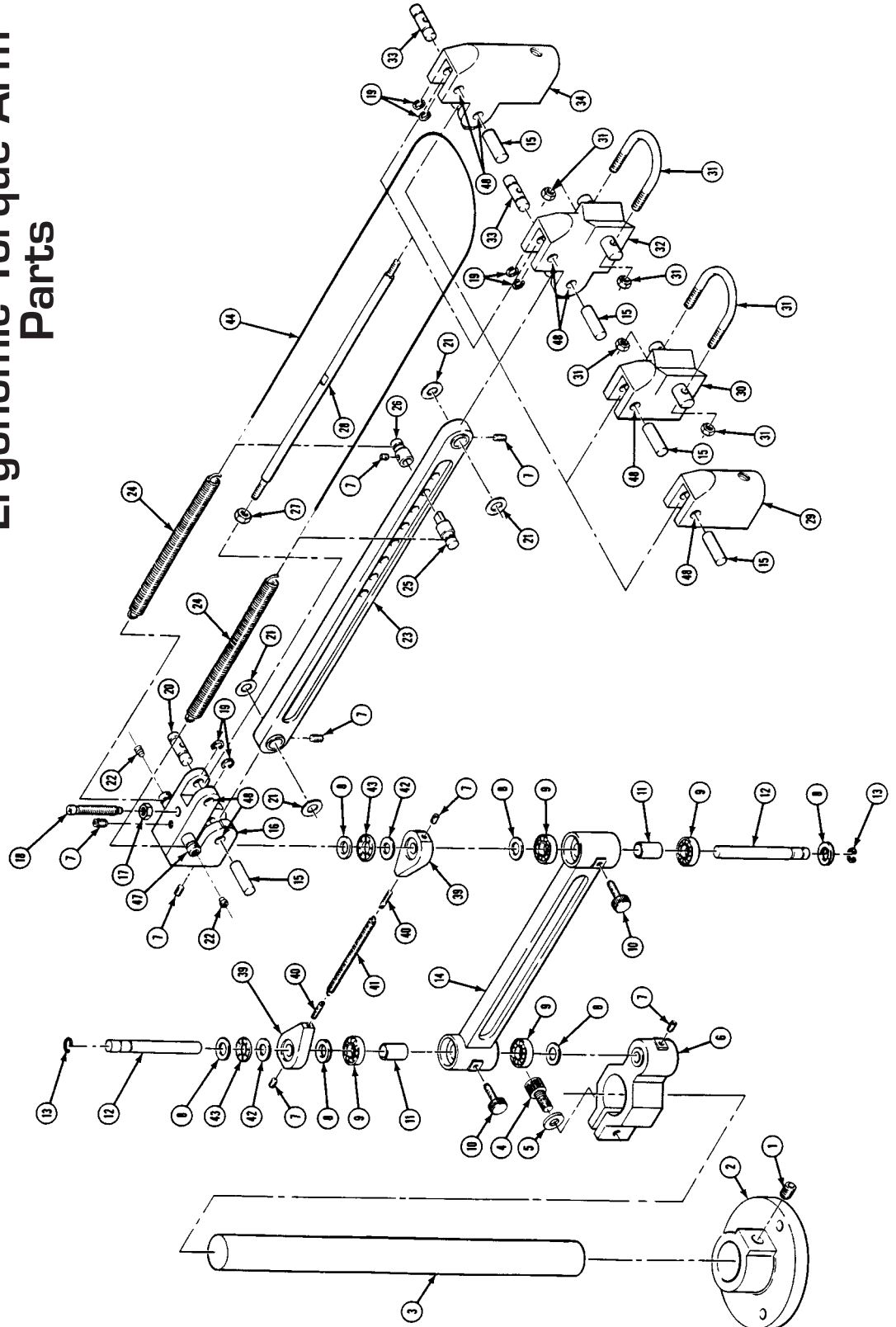




Ergonomic Torque Arm

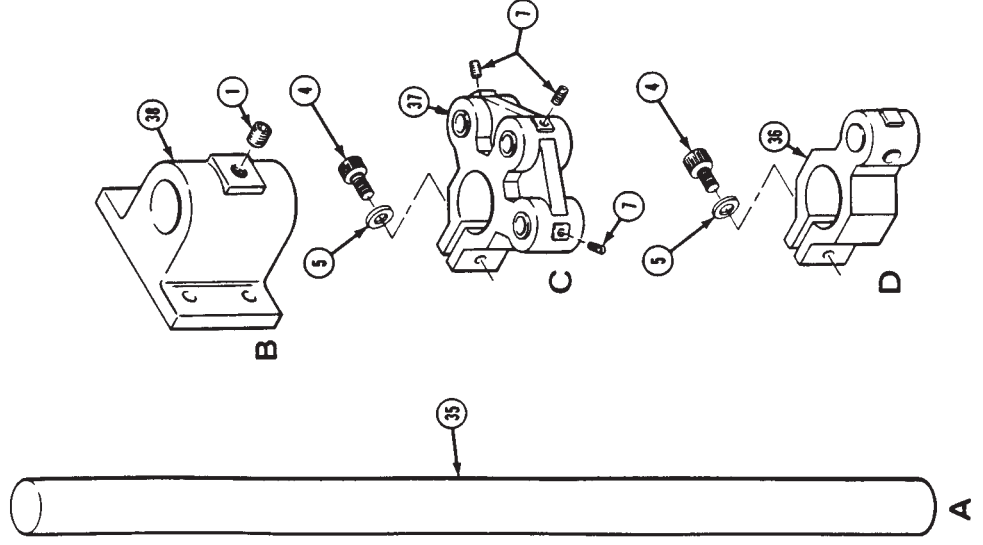
4600 Series Ergonomic Torque Arm Parts





Ergonomic Torque Arm

4600 Series Ergonomic Torque Arm Optional Parts



Item No.	Description	Part No.
23	Arm Support	9905493
24	Counter Balance Spring	9925532
25	Pin Support (Male)	9925533
26	Pin Support (Female)	9925534
27	1/4-20 Jam Nut	9925492
28	Parallel Bar	9925500
29	Pneumatic Head	9905488
30	Universal Head	9905490
31	U-Bolt Assembly	9925480
32	Universal Head	9905491
33	Parallel Pin Left	9925485
34	Pneumatic Head	9905489
35	Column 30"	9925476
36	FLR Bracket	9905495
37	Multi Arm Bracket	9905494
38	Wall Mount	9905483
39	Home Position Cam	9905492
40	Anchor Spring	9925505
41	Spring	9925499
42	Thrust Washer	9925504
43	Needle Bearing	9925503
44	Safety Wire	21424
45	1/8" Allen Wrench (not shown)	9927172
46	1/4" Allen Wrench (not shown)	9925496
47	Spring Support Pin	9925535
48	Bearing	9925511

Parts List

Item No.	Description	Part No.
1	1/2" Set Screw, Cup Pt	9925493
2	Table Mount	9905482
3	Column 18"	9925475
4	5/16" Screw, Socket Head 1" Long	9925481
5	1 1/16" Washer	9925477
6	Single Arm Bracket	9905484
7	1/4" Set Screw, Cup Pt	9925495
8	Washer 1/2" ID 7/8" O.D.	9925488
9	Bearing (4)	9925490
10	Thumb Screw	9925494
11	Nylon Sleeve	9925478
12	Pin Joint	9925487
13	Retaining Ring	9926917
14	Arm Extension	9905485
15	Arm Pin	9925484
16	Bracket Support Arm	9905497
17	Jam Nut for Arm Pin	9925491
18	Arm Stop Pin	9925479
19	Retaining Ring	19154
20	Parallel Pin (Right Hand)	9925486
21	Arm Shim	9925516
22	1/4" Set Screw, Half Dog Pt	19153

Options

Item No.	Description	Part No.
A	Column 30"	9925476
B	Wall Mount Assembly	9905469
C	Multi Arm Bracket Assembly	9905471
D	FLR Bracket	9905495