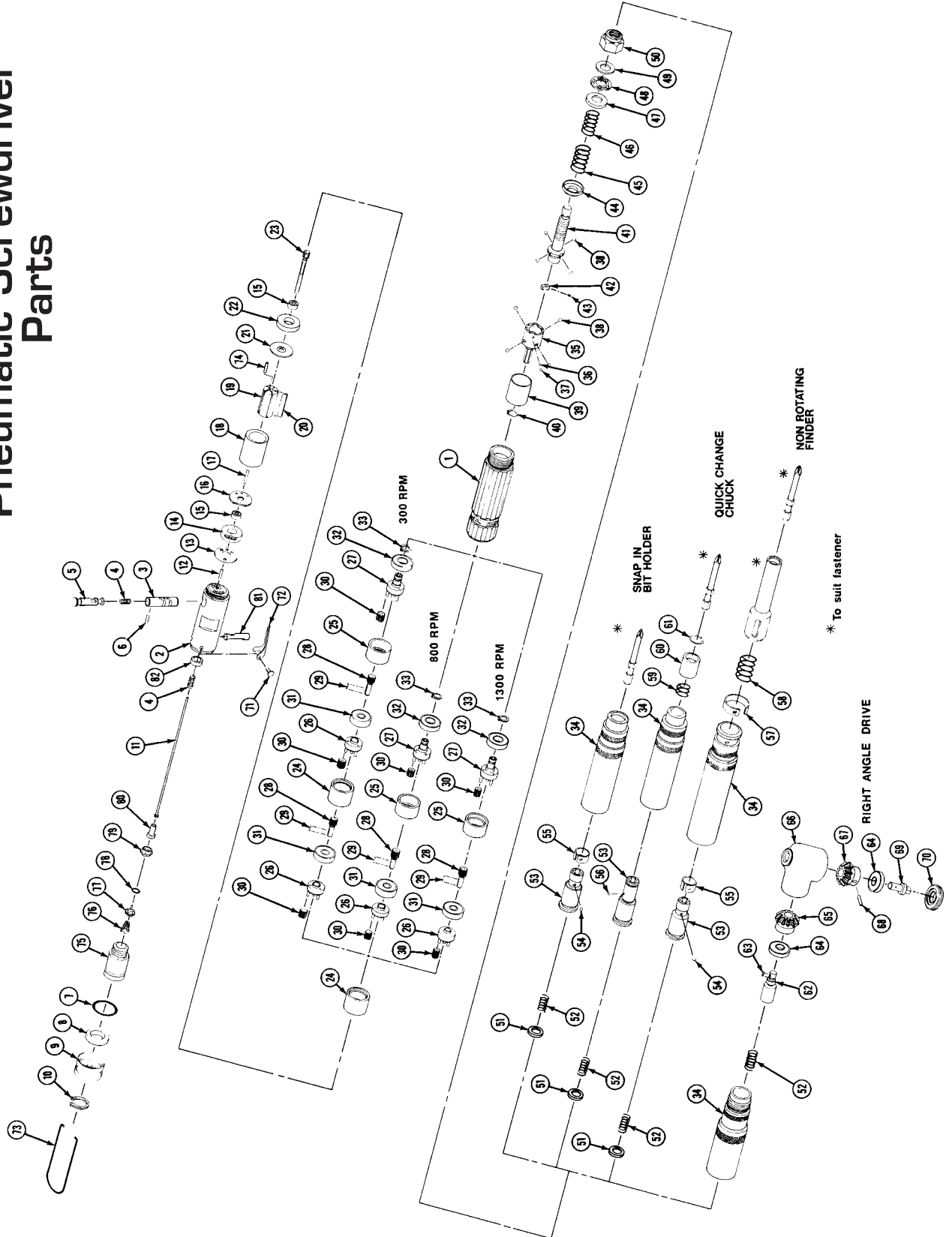




Pneumatic Screwdrivers

2500/2800 Series Pneumatic Screwdriver Parts





Pneumatic Screwdrivers

Item No.	Description	Part No.
1	Motor Housing 300 RPM Models 800 RPM Models, & 1300 RPM Models	9926025 9926024 9925070 9925071 9926014 9926015 9926094 9926918 9926441 9926916 9926917
2	Head	9925070
3	Valve Bushing	9925071
4	Spring (2 Req)	9926014
5	Valve	9926015
6	Pin	9926094
7	O-Ring	9926918
8	Muffler	9926441
9	Muffler Cap	9926916
10	Retaining Ring, Ext	9926917
11	Valve Rod Assy 300 RPM Models 800 RPM Models, & 1300 RPM Models	9925089 9925088 9926215 9926924 9926360 9926245 9926925 9926212 9926019 9926018 9926020 9926017 9926019
12	Alignment Pin	9926215
13	Cover Plate	9926924
14	Bearing Ring	9926360
15	Bearing (2 Req)	9926245
16	Upper End Plate	9926925
17	Alignment Pin	9926212
18	Cylinder	9926019
19	Rotor	9926018
20	Rotor Blade (5 Req)	9926020
21	Lower End Plate	9926017
22	Lower Bearing Ring	9926019
23	Spindle Gear 300 RPM Models, 1300 RPM Models & 800 RPM Models	9926921 9926022 9926929
24	Ring Gear 300 RPM Models (2 Req) 800 RPM Models (1 Req) 1300 RPM Models (1 Req)	9926921 9926022 9926929
25	Ring Gear	9926927
26	Idle Gear Plate Assy 300 RPM Models (2 Req) 1300 RPM Models (1 Req) 800 RPM Models (1 Req)	9905047 9905048
27	Driver/Pin Assy 300 RPM Models, 1300 Models 800 RPM Models	9905609 9905613
28	Short Spindle Gear 300 RPM Models (2 Req) 1300 RPM Models (1 Req) 800 RPM Models (1 Req)	9926922 9926969

Item No.	Description	Part No.
29	Groove Pin 300 RPM Models (2 RReq) 800 RPM Models (1 Req) 1300 RPM Models (1 Req)	9926331 9926213
30	IDLER GEAR 300 RPM Models (9 Req) 1300 RPM Models (6 Req) 800 RPM MMModels (6 Req)	9926537 9926930
31	BEARI NG 300 RPM MMModels (2 Req) 800 RPM MODELS (1 Req) 1300 RPM Models (1 Req)	9966331 9926553
32	Bearing	9966331
33	Retaining Ring	9926553
34	Clutch Housing Assy Models 2501, 2502, 2503 Models 2504, 2505, 2506 Models 2507, 2508, 2509 Models 2801, 2802, 2803	9905919 9905920 9905941 9925090
35	Clutch Cam	9926931
36	Chrome Steel Ball 3/32" Dia (11 Req)	9926349
37	Plug	9926937
38	Chrome Steel Ball 1/8" Dia (8 Req)	9926353
39	Clutch Sleeve	9926932
40	Retaining Ring	9926935
41	Clutch Spindle	9925059
42	Tripper Block	9925060
43	Compression Spring, Tripper Spring	9926938
44	Clutch Washer	9926998
45	Compression Spring, Heavy Clutch Spring	9926988 9926989
46	Inner Clutch Spring	9926985
47	Spring Retainer	9926984
48	Thrust Retainer	9926945
49	Thrust Washer	9926936
50	Locknut	9926936
51	Spring Retainer 2500 Series Model	9925082
52	Only Compression Spring 2500 Series Model 2800 Series Models	9925083 9928104
53	Bit Driver Models 2501,2502, 2503, 2507, 2508 2509 Models 2504 2505, 2506	9926949 9905932
54	Chrome Steel Ball 1/8" Dia Models 2501, 2502, 2503, 2507, 2508, 2509	9926353
55	C'Spring Models 2501, 2502, 2503, 2507, 2508, 2509	9926950

Item No.	Description	Part No.
56	Chrome Steel Ball 3/32" DIA Models 2504,2505, 2506	9926349
57	C'Spring Assy Models 2507, 2508, 2509	9905580
58	Finder Spring Models 2507,2508, 2509	9926953
59	Q.C. Spring Models 2504, 2505, 2506	9926029
60	Q.C. Collet Models 2504, 2505,2506	9926030
61	Round Section Retaining Ring Models 2504, 2505, 2506	9926031
62	Drive Gear Shaft Models 2801, 2802, 2803	9928103
63	Key Models 2801,2802, 2803	9946512
64	Ball Bearing (2 Req) Models 2801, 2802, 2803	9966331
65	Driving Gear Models 2801, 2802,2803	9946434
66	Angle Head Assy Models 2801,2802,2803	9905144
67	Driven Gear Models 2801, 2802,2803	9946510
68	Roll Pin Models 2801, 2802, 2803	9986466
69	Spindle Assy Models 2801, 2802, 2803	9905147
70	Bearing Retainer Models 2801,2802, 2803	9946347
71	Stud, Round Head, Grooved (2 Req)	9924023
72	Lever	9925093
73	Ball	9926352
74	Pin, Dowel	9926254
75	Inlet Fitting Assy	9925091
76	Valve Spring	9986925
77	Toggle Valve Assy	9925092
78	O-Ring	9930026
79	O-Ring Retainer	9925075
80	Valve, Shut Off	9925077
81	Lever, Valve	9925076
82	Valve Rod Seat	9925081

1300 RPM	800 RPM	300 RPM	Output Type
2501	2502	2503	Snap In Bit Holder
2504	2505	2506	Q.C Chuck
2507	2508	2509	Non-Rotating Finder
2801	2802	2803	Rt. Angle Drive
0.5-5 LBF-In	0.5-8 LBF-In	0.5-12 LBF-In	